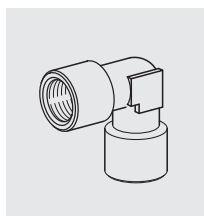


Airline Adaptors

4.4.1

page 32



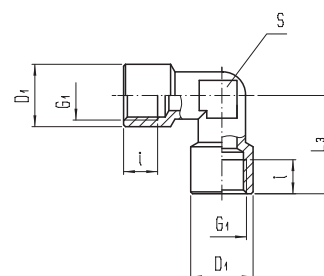
Elbow, female

Cylindrical

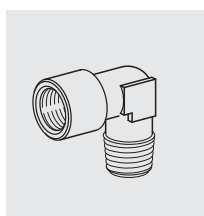
Material: brass, nickel plated

Temperature range: -40°C ... +120°C

Maximum pressure: 50 bar



Port size G1	i	L3	D1	S	Type
G 1/8"	8,5	21	14	11	201M-1/8
G 1/4"	11	25,5	17	13	201M-1/4
G 3/8"	11,5	28	21	17	201M-3/8
G 1/2"	15	32	26,5	20	201M-1/2
G 3/4"	16,5	36,5	32	27	201M-3/4
G 1"	19	45	39	30	201M-1

Dimensions might vary.

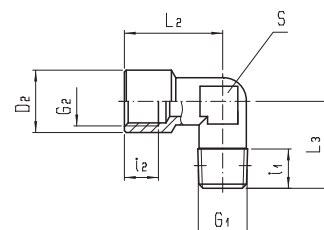
Elbow, female-male

Conical - Cylindrical

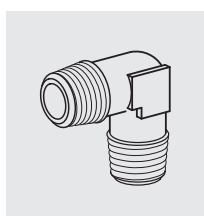
Material: brass, nickel plated

Temperature range: -40°C ... +120°C

Maximum pressure: 50 bar



Port size G1	Port size G2	i1	i2	L2	L3	D2	S	Type
1/8" K	G 1/8"	7,5	8,5	21	18,5	14	11	202M-1/8K-1/8
1/4" K	G 1/4"	11	11	25,5	24	17	13	202M-1/4K-1/4
3/8" K	G 3/8"	11,5	12	28	27	21	17	202M-3/8K-3/8
1/2" K	G 1/2"	14	15	32	29,5	26,5	20	202M-1/2K-1/2
3/4" K	G 3/4"	14,5	16,5	36,5	32	32	27	202M-3/4K-3/4
1" K	G 1"	16	19	45	39	39	30	202M-1K-1

Dimensions might vary.

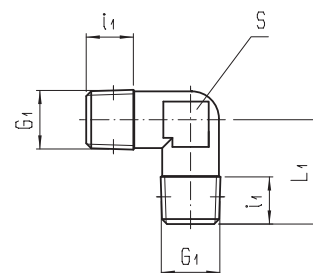
Elbow, male

Conical

Material: brass, nickel plated

Temperature range: -40°C ... +120°C

Maximum pressure: 50 bar



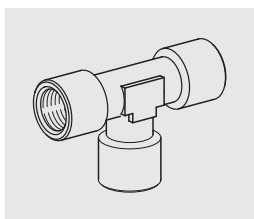
Port size G1	i1	L1	S	Type
1/8" K	7,5	18	11	204M-1/8K
1/4" K	11	24	13	204M-1/4K
3/8" K	12	27	17	204M-3/8K
1/2" K	14	29,5	20	204M-1/2K
3/4" K	14,5	32	27	204M-3/4K
1" K	16,8	39	30	204M-1K

Dimensions might vary.

Airline Adaptors

4.4.2

page 33



T, female

Cylindrical

Material:

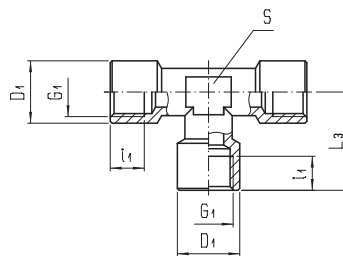
brass, nickel plated

Temperature range:

-40°C ...+120°C

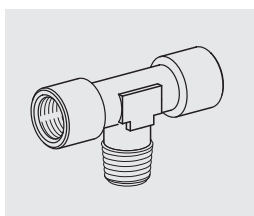
Maximum pressure:

50 bar



Port size G1	i1	L3	D1	S	Type
G 1/8"	8,5	19,5	14	12	200M-1/8
G 1/4"	11	24,5	17	13	200M-1/4
G 3/8"	12	27	21	16	200M-3/8
G 1/2"	15	32	26,5	20	200M-1/2
G 3/4"	16,5	36,5	32	27	200M-3/4
G 1"	19	45	39	30	200M-1

Dimensions might vary.



T, male- female-female

Conical - Cylindrical - Cylindrical,

Material:

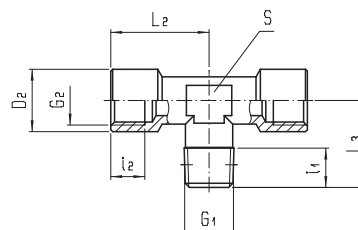
brass, nickel plated

Temperature range:

-40°C ...+120°C

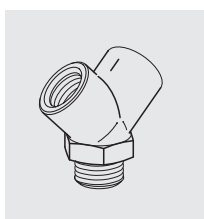
Maximum pressure:

50 bar



Port size G1	Port size G2	i1	i2	L2	L3	D2	S	Type
1/8" K	G 1/8"	8	8,5	19,5	17,5	14	12	206M-1/8K-1/8
1/4" K	G 1/4"	11	11	24,5	23	17	13	206M-1/4K-1/4
3/8" K	G 3/8"	11,5	12	27	25,5	21	16	206M-3/8K-3/8
1/2" K	G 1/2"	14	15	32	29	26,5	20	206M-1/2K-1/2
3/4" K	G 3/4"	14,5	16,5	36,5	32	32	27	206M-3/4K-3/4
1" K	G 1"	16,8	19	45	39	39	30	206M-1K-1

Dimensions might vary.



Y, male-female-female

Conical - Cylindrical - Cylindrical

Material:

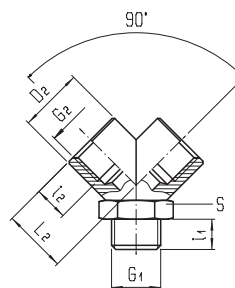
brass, nickel plated

Temperature range:

-40°C ...+120°C

Maximum pressure:

50 bar



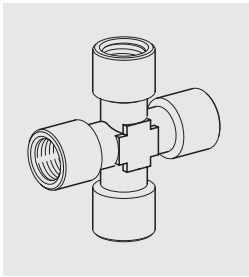
Port size G1	Port size G2	i1	i2	L2	D2	S	Type
1/8" K	G 1/8"	9	8	15	14	14	216M-1/8K-1/8
1/4" K	G 1/4"	11	11	17	17	17	216M-1/4K-1/4
3/8" K	G 3/8"	12,5	11,5	18	21	22	216M-3/8K-3/8
1/2" K	G 1/2"	16,5	14	25	26,5	26	216M-1/2K-1/2

Dimensions might vary.



Airline Adaptors

4.4.3
page 34



Cross, female

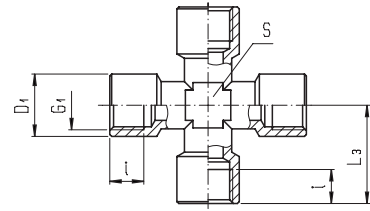
Cylindrical

Material:

brass, nickel plated

Temperature range: -40°C ...+120°C

Maximum pressure: 50 bar



Port size G1	i1	L3	D1	S	Type
G 1/8"	8,5	19,5	14	11	203M-1/8
G 1/4"	11	25	17	13	203M-1/4
G 3/8"	12	28	21	17	203M-3/8
G 1/2"	15	32	26,5	20	203M-1/2

Dimensions might vary.

*This is only a selection of Airline Adaptors.
Numerous other version are available on request.*